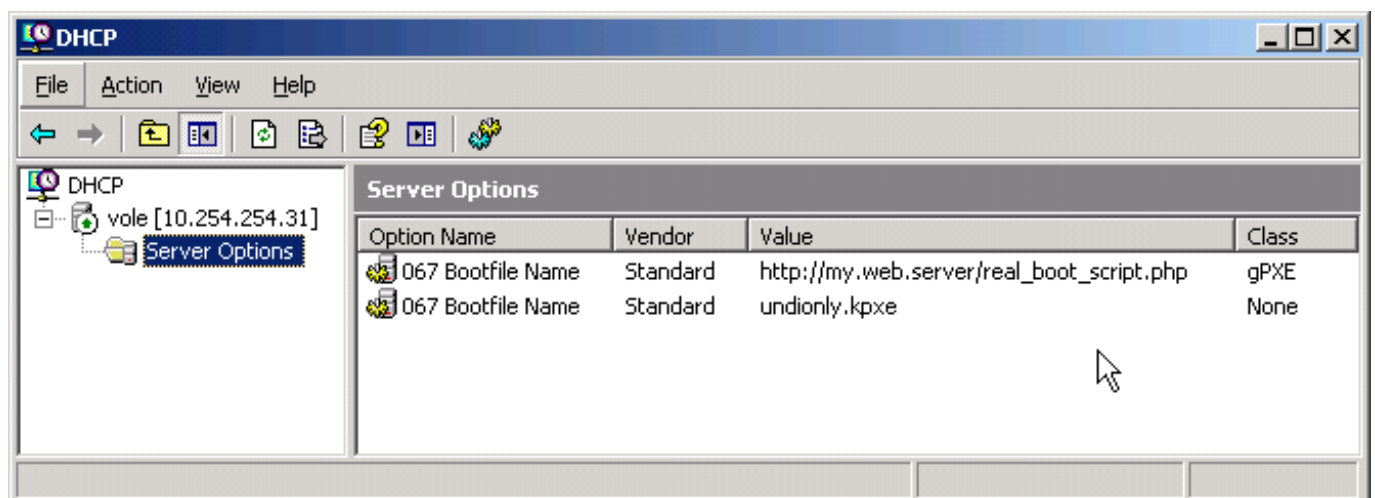




[Pxe But Gpxe Extensions Not Detected](#)



[Pxe But Gpxe Extensions Not Detected](#)



DOWNLOAD



DOWNLOAD

This User Manual explains how to install, configure and compile the Etherboot package.. The rationale is this: The BIOS does not need an Etherboot ROM to function and the Etherboot ROM can work equally well with another BIOS implementation.. These restrictions are here to protect us as authors, not to restrict you as learners and educators.

This brings up the normal GRUB screen and the system boots as normal I have done some searching on the internet and it seems that the problem does lie with Xens hypervisor kernel and its inability to read the iBFT (Iscsi Boot Firmware Table).. The iPXE project has the same features as before with active bug fixes and features being added all the time.. Thanks to Markus Gutschke who wrote the first version of this document, and to all the people who have contributed information and corrections to this document.. The following is not legal advice and you should seek your own legal advice but it is a reasonable interpretation of the GPL with respect to Etherboot and BIOS code.. Under this interpretation, there is no fear that you have to GPL your BIOS if you ship Etherboot with your BIOS.

gpxe extensions not detected

gpxe extensions not detected

Please be sure to double check the commands referenced in this article as they might have changed in name from gPXE to iPXE.

Therefore putting Etherboot either on a ROM chip or in the same chip as the BIOS does not cause the two to become a combined work.. The code uses the DHCP, tftp and NFS Internet Protocols, amongst others For a rather out of date but short talkutorial type introduction to what Etherboot does, see my SLUG talk.

The GPL does not extend to other works that a GPLed binary is aggregated with on a storage medium.. This document and related documents are also kept online at the Etherboot Home Page.. Etherboot is a software package for creating ROM images that can download code over an Ethernet network to be executed on a computer.. Etherboot works on the x86, Itanium and Hammer architectures Typically the computer is diskless and the code is Linux or FreeBSD, but these are not the only possibilities.. Installing Etherboot, either as an extension BIOS or combined in the BIOS chip is mere aggregation.. This means that our network card will do its standard PXE boot up, and when it loads, we will then load the gPXE iPXE loader and use gPXE iPXE for the rest of the boot process.. Exceptions to these rules may be granted for academic purposes: Write to the author and ask.. Now in order to get PXE to load the gPXE iPXE firmware we need to do what is called chainloading.

e10c415e6f